



# LIGHT LINE™

A MONTHLY BLOG FROM MIAMI LIGHTHOUSE FOR THE BLIND

Issue 9 December 2014

## In This Issue

["See The Light" Luncheon Honors Miami Lighthouse Supporters](#)

[Stakeholders Report](#)

[Upcoming Event](#)

## "See The Light" Luncheon Honors Miami Lighthouse Supporters

"Wind beneath My Wings," sang Latin Grammy performer and grateful Miami Lighthouse client, Natalia Sulca, to more than 200 invited guests at the Riviera Country Club on Thursday, November 20th. The complimentary luncheon, attended by South Florida's most important philanthropists and community leaders, was emceed by Board Director Donna Abood, Chair of the Beacon Council. The luncheon was also the setting for an important announcement by a generous donor, the "Expansion of the Center of Excellence in Vision Rehabilitation Grant Challenge." Under the terms of the Challenge, the donor will match gifts dollar for dollar up to a total of \$5 million supporting facility expansion of our Center of Excellence in Vision Rehabilitation estimated to cost \$10 million in construction. In addition, \$1 million will be raised to support these enter of Excellence Programs.



Miami Lighthouse Board Directors Steven Solomon and Edward Rosasco, President & CEO Virginia Jacko, Board Directors Ray Casas, Angela Whitman, Kent Benedict, Chair Agustin Arellano, Jr., Louis Nostro, John Harriman and Bill Beckham

When completed, the expansion will enable Miami Lighthouse to increase-and provide access to-critically needed services for the growing numbers of blind babies, children and seniors with age-related eye disease as a means of empowering them to lead independent and productive lives. The new Center of Excellence in Vision Rehabilitation will enable the Miami Lighthouse to meet the over 300% increase in demand for services for visually impaired children and the over 400% increase in demand for services for adults with age-related eye disease.

The annual luncheon was sponsored by Florida Power & Light, Shutts & Bowen LLP, and JM Private Insurance. Pre-luncheon hors d'oeuvres were underwritten by Norma Jean Abraham. For more information on donating to the Challenge, [Click here](#) or call CEO Virginia Jacko at 305-856-4176.

# Walgreens

## AT THE CORNER OF HAPPY & HEALTHY™

Shop at Walgreens December 14 to 21 to benefit Miami Lighthouse for the Blind as part of their scannable charity giving project. Ask when you checkout at the following ten participating stores:

- |        |                                |        |                          |
|--------|--------------------------------|--------|--------------------------|
| 621-   | 5731 SW Bird Road, Miami       | 6012-  | 655 NW 57th Ave., Miami  |
| 748-   | 12295 N. Biscayne Blvd., Miami | 4809-  | 3595 SW 22nd St, Miami   |
| 10900- | 490 Bird Road, Miami           | 4384-  | 400 Hialeah Drive, Miami |
| 3784-  | 3655 S. Dixie Highway, Miami   | 4385-  | 770 W. 29th St., Miami   |
| 2544-  | 775 SW 8th Ave., Miami         | 12285- | 780 E. 9th St., Miami    |

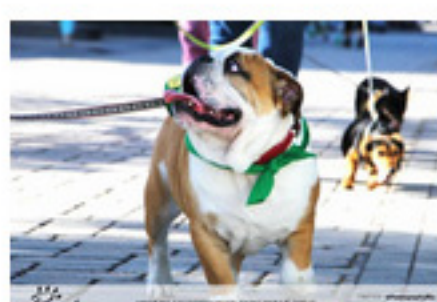
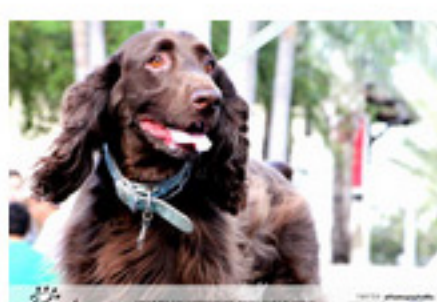
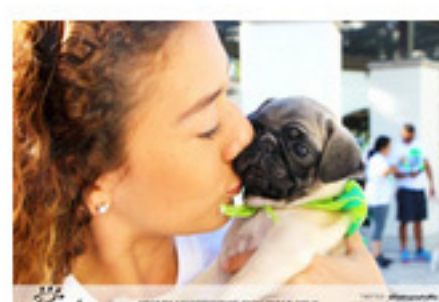
## Mid-year Stakeholders Report Offers Exciting News

The winter edition of our *Lantern* newsletter reported to stakeholders that having increased classroom capacity in our new Spencer Educational Empowerment Center resulted in Miami Lighthouse receiving a Miami-Dade County Public Schools grant to empower our adults to earn their GED despite their blindness. Miami Lighthouse currently has approximately forty-five students enrolled in the GED and ESOL classes.

The report also noted that twenty-six legally blind clients of the Miami Lighthouse's Job Readiness Program have obtained mainstream employment as a result of our successful employment collaborations with the Florida Division of Blind Services, Switchboard Miami, Baptist Health, Perez Art Museum (PAMM), Micro Data, Hyatt Hotels, Marriott Worldwide Call Center and others.

## Upcoming Event

Get ready for our annual **Walk, Waggle & Stroll Dog Walk** on Sunday, March 15, 2015 at the Shops at Midtown Miami.



Looking for a holiday gift for someone with age related eye disease?

Call our Vision Solutions Store manager, John Garcia, at 786-362-7489.



Contributed by Joan Spector



601 SW 8th Avenue | Miami, FL 33130  
305-856-2288  
[www.miamilighthouse.org](http://www.miamilighthouse.org)

Donate Now!

STAY CONNECTED

